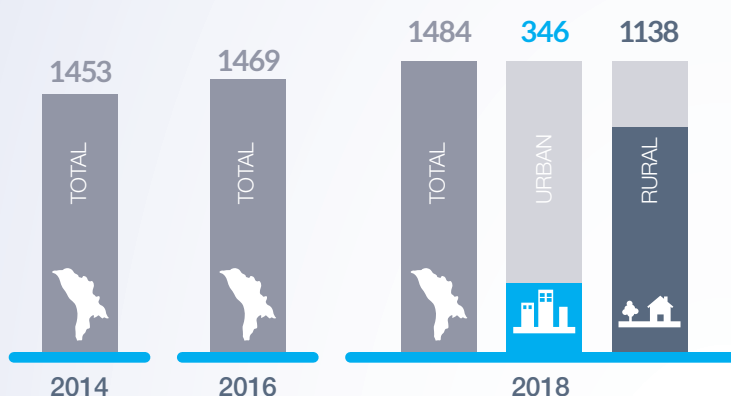




Educația

unicef
for every child

Instituții de educație timpurie



NUMĂRUL DE COPII ÎN INSTITUȚII DE EDUCAȚIE TIMPURIE



RATA BRUTĂ DE CUPRINDERE ÎN ÎNVĂȚĂMÂNTUL PREȘCOLAR, ÎN 2018



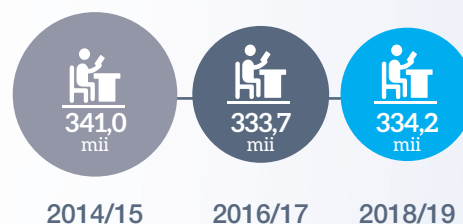
Instituții de învățământ primar și secundar general

NUMĂRUL DE INSTITUȚII



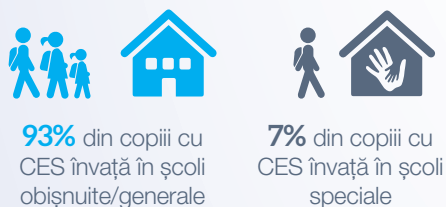
Numărul de instituții de învățământ primar și secundar general **s-a redus**

NUMĂRUL DE ELEVI

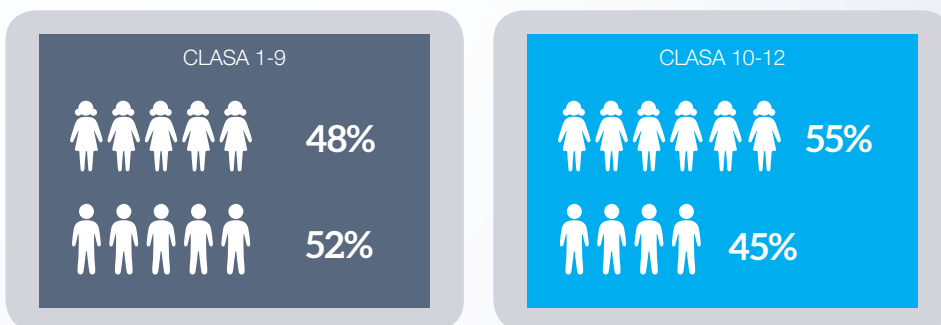


COPII CU CERINȚE EDUCATIONALE SPECIALE (CES)

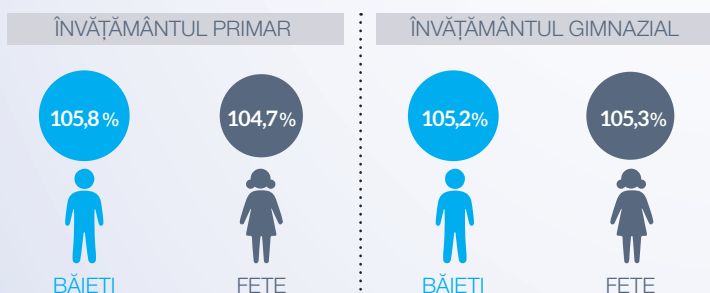
În 2018/19 au fost înregistrați **10,3 mii** copii cu cerințe educaționale speciale



RAPORTUL FETE-BĂIEȚI ÎN 2018/19

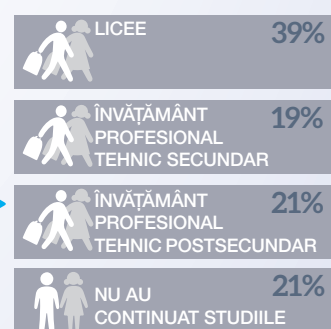


RATA BRUTĂ DE CUPRINDERE ÎN 2018/19



CONTINUARE STUDII ÎN 2018/19

După absolvirea învățământului gimnazial

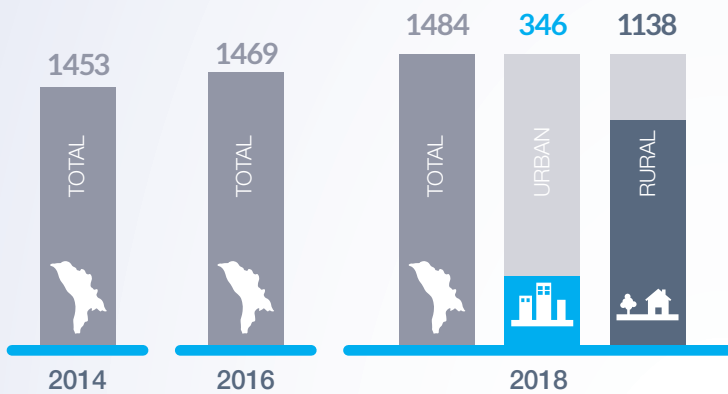




Education

unicef 
for every child

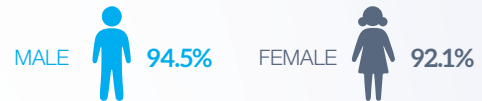
Early education institutions



THE NUMBER OF CHILDREN IN EARLY EDUCATION INSTITUTIONS

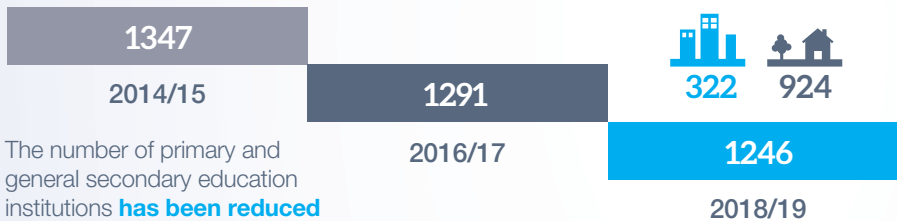


THE GROSS ENROLMENT RATIO IN PRE-PRIMARY EDUCATION IN 2018

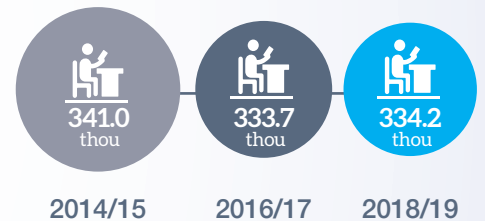


Primary and general education institutions

THE NUMBER OF INSTITUTIONS

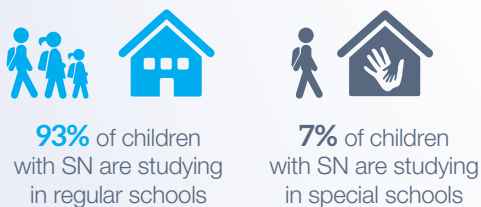


THE NUMBER OF STUDENTS

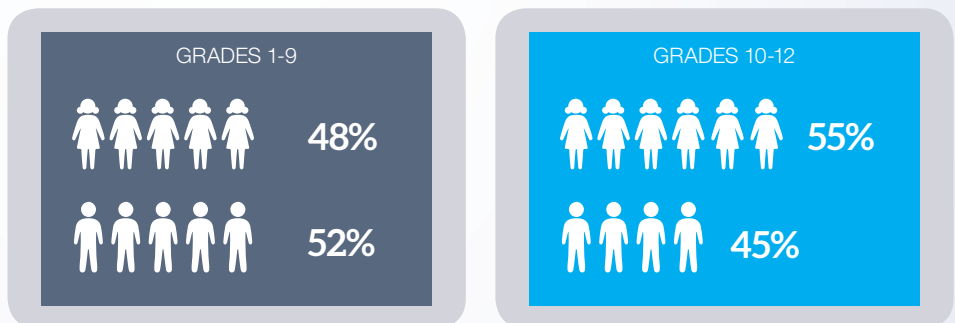


CHILDREN WITH SPECIAL NEEDS

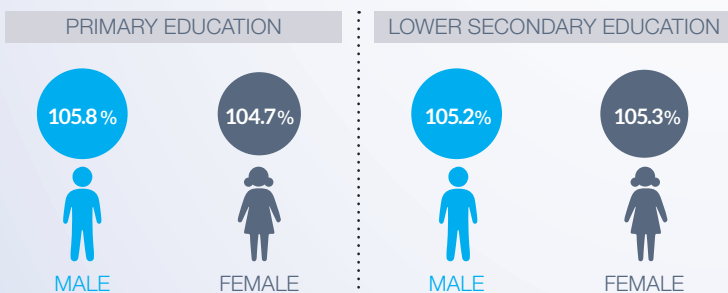
In 2018/19 **10.3 thousand** children with special needs (SN) were registered



GIRLS-BOYS RATIO IN 2018/19



THE GROSS ENROLMENT RATIO IN 2018/19



CONTINUATION OF STUDIES IN 2018/19

After graduating from gimnasium education

