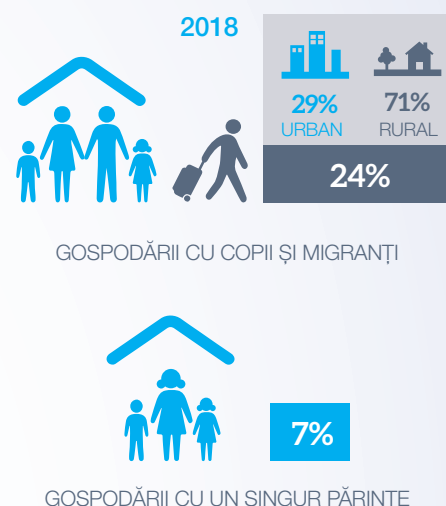
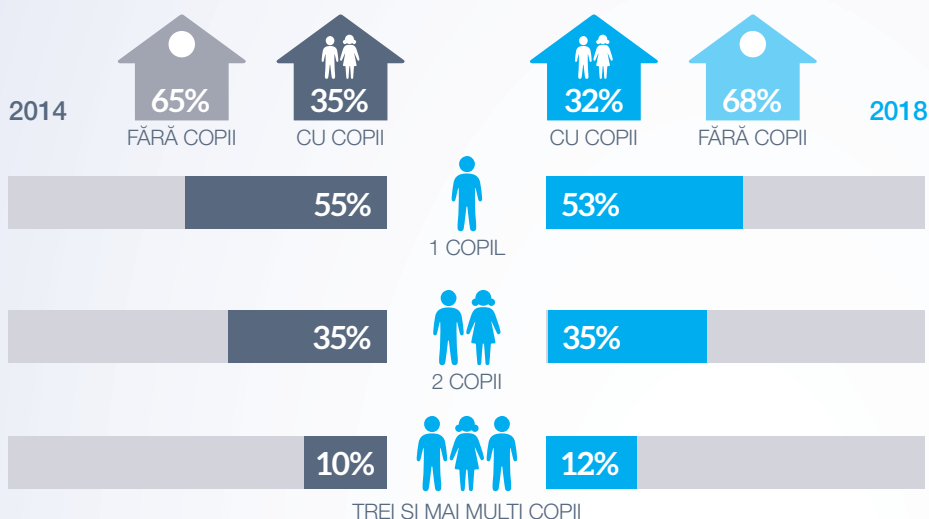




# Familia și copilul

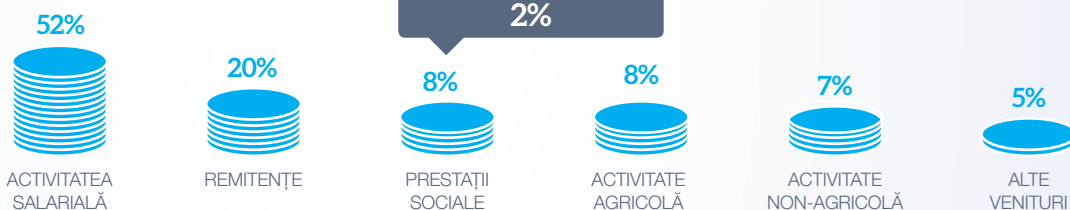
unicef  
for every child

## Principalele caracteristici ale gospodăriilor cu copii



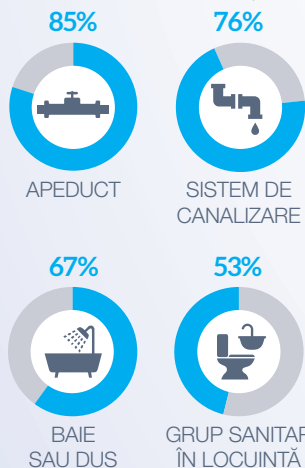
## Structura veniturilor gospodăriilor cu copii în 2018

Veniturile disponibile pe o persoană din cadrul gospodăriilor cu copii a constituit **2024,1 lei** (lunar)

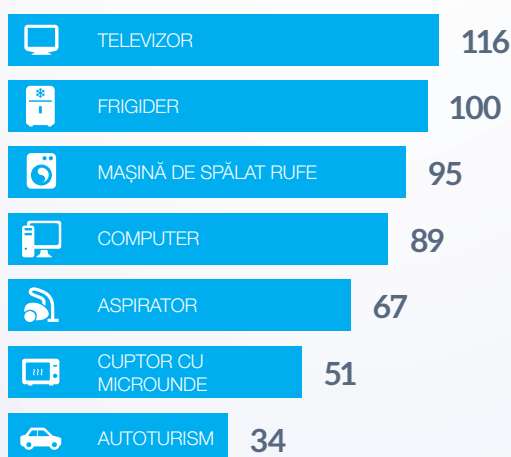


## Nivelul de dotare a gospodăriilor cu copii în 2018

### PONDEREA GOSPODĂRIILOR CU COPII CU ACCES LA UTILITĂȚI

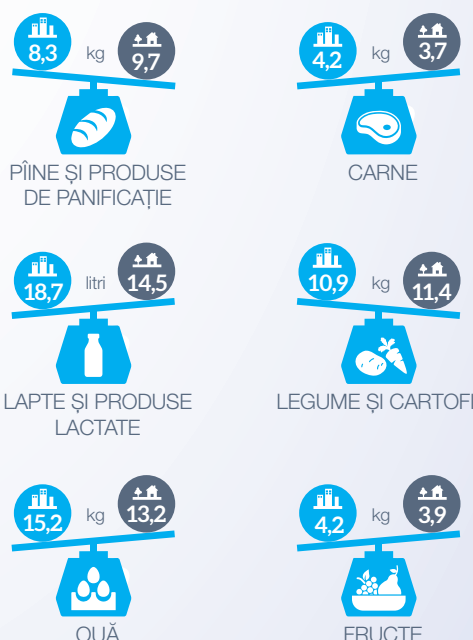


### BUNURI DE FOLOSINȚĂ DURABILĂ bucăți la 100 gospodării cu copii



## Rația alimentară în 2018

lunar, pentru o persoană

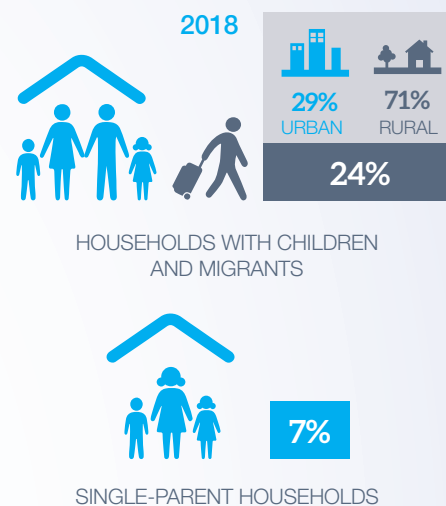
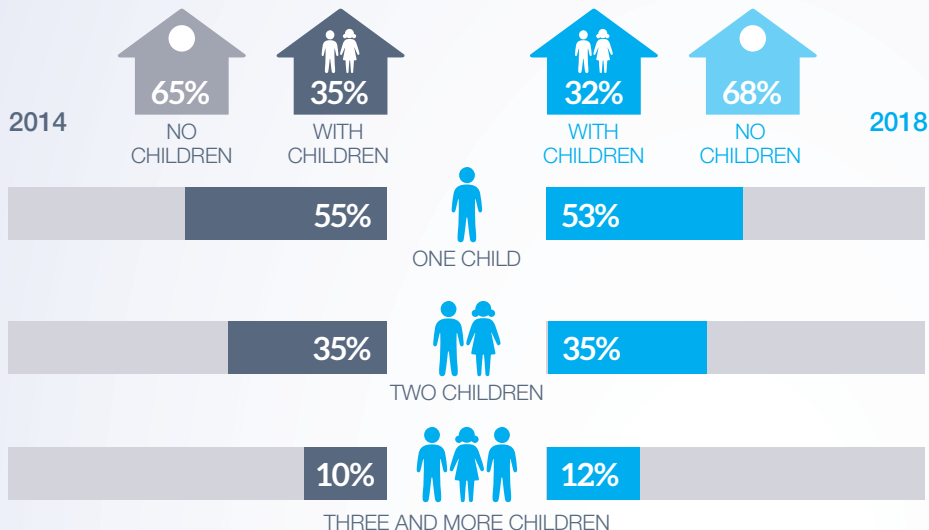




# Family and children

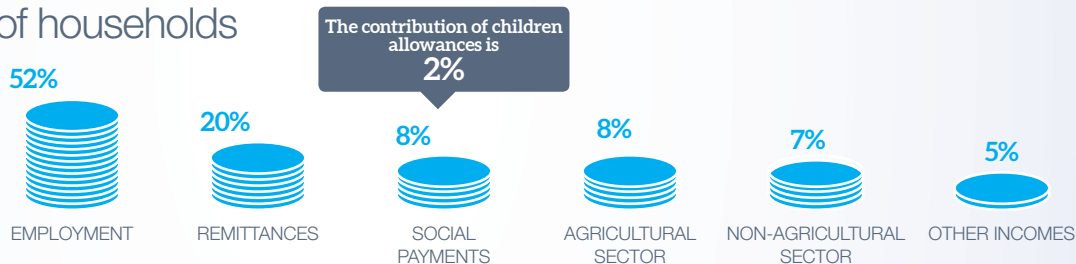
unicef  
for every child

## Main characteristics of households with children



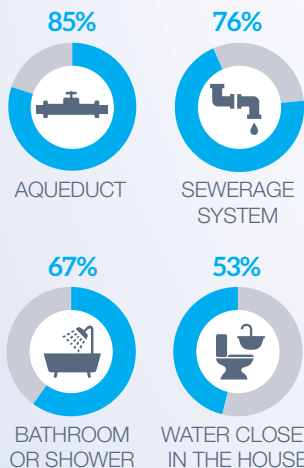
## Structure of incomes of households with children in 2018

The disposable income per person, in the households with children, accounted **2024.1 lei** monthly

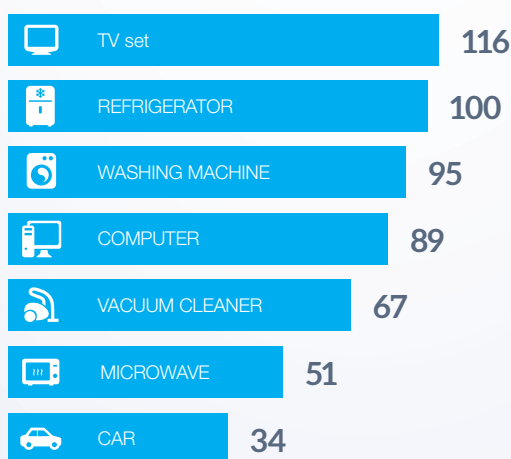


## Level of equipment of households with children in 2018

### THE SHARE OF HOUSEHOLDS WITH CHILDREN WITH ACCESS TO FACILITIES



### MAIN DURABLE GOODS units per 100 household with children



## Food ratio in 2018

monthly per one person



Relative indicators were calculated based on population with usual residence.