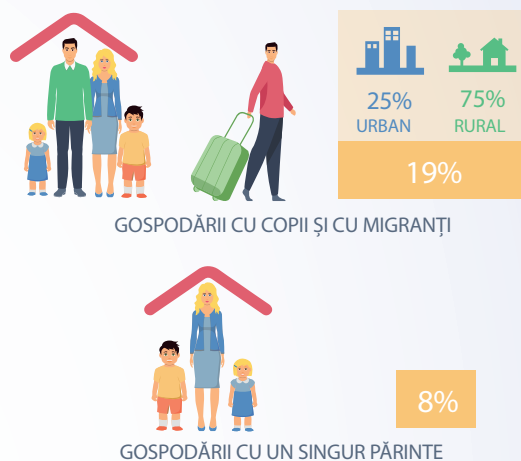
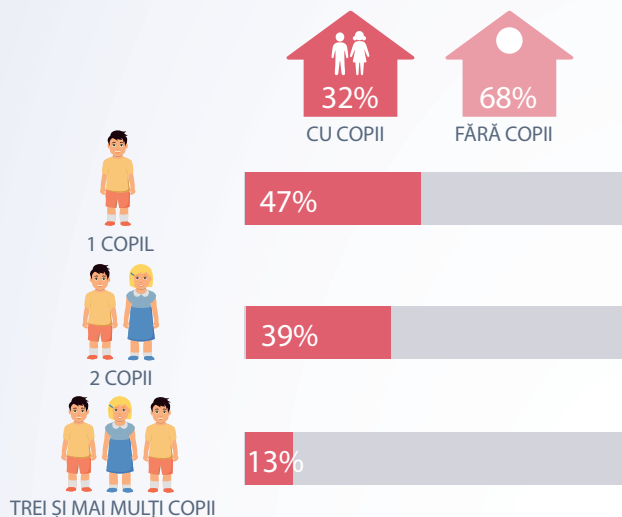


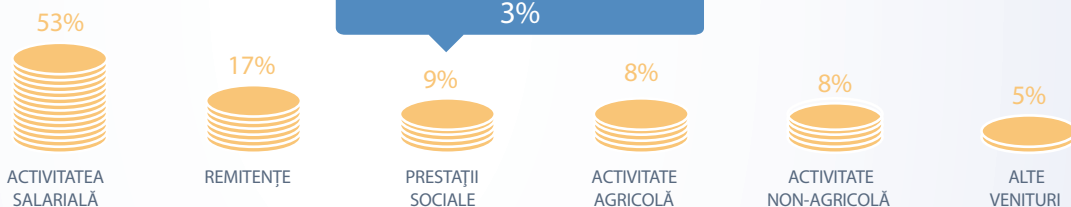
Familia și copilul

Principalele caracteristici ale gospodăriilor cu copii, în 2019*



Structura veniturilor gospodăriilor cu copii, în 2019

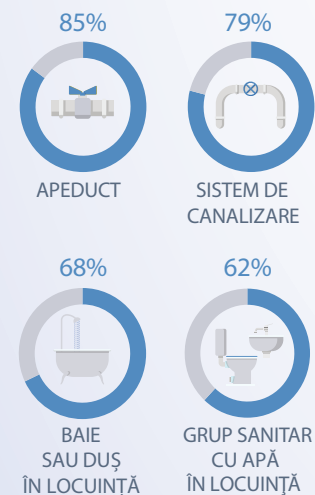
Veniturile disponibile pe o persoană din cadrul gospodăriilor cu copii a constituit **2449,1 lei** (lunar)



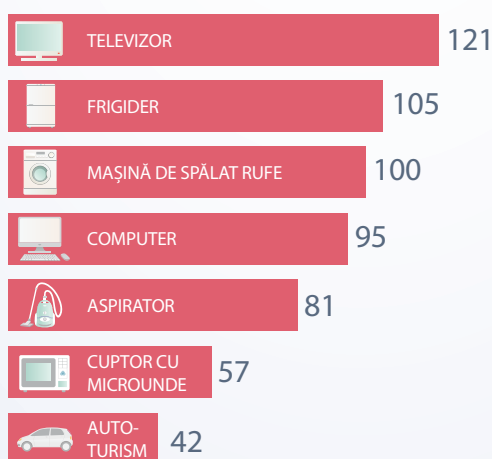
Contribuția indemnizațiilor pentru copii în total venituri este de **3%**

Nivelul de dotare a gospodăriilor cu copii, în 2019

PONDEREA GOSPODĂRIILOR CU COPII CU ACCES LA UTILITĂȚI



BUNURI DE FOLOSINȚĂ DURABILĂ bucăți la 100 gospodării cu copii



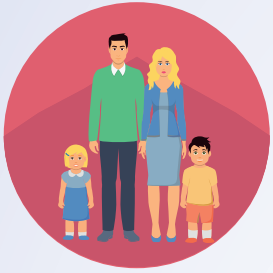
Rația alimentară pe medii, în 2019

lunar, pentru o persoană



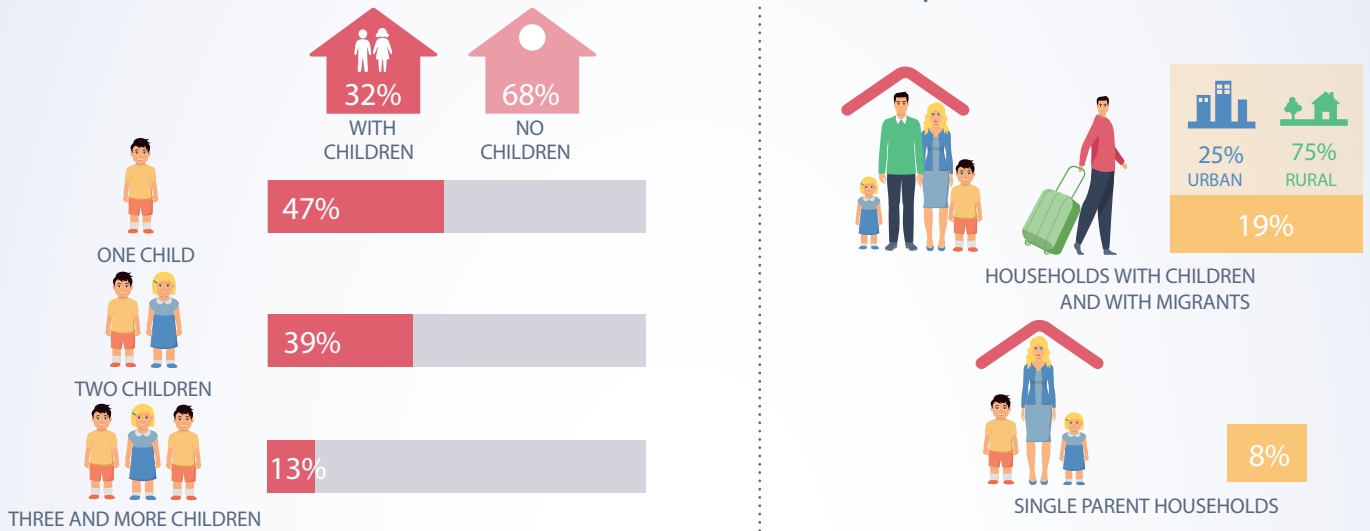
Indicatorii relativi sunt calculați în baza populației cu reședință obișnuită.

* Datele nu sunt comparabile cu anii precedenți, deoarece a fost modificată metodologia CBGC.



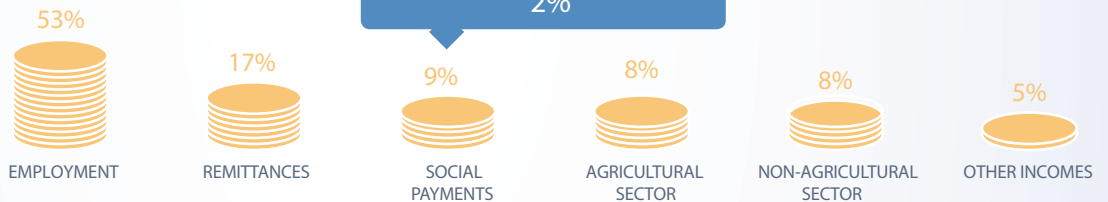
Family and children

Main characteristics of households with children, in 2019*



Structure of incomes of households with children, in 2019

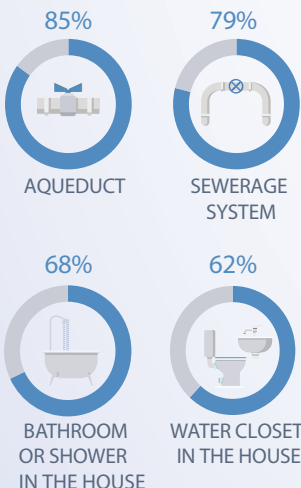
The disposable income per person, in the households with children, accounted **2449.1 lei** monthly



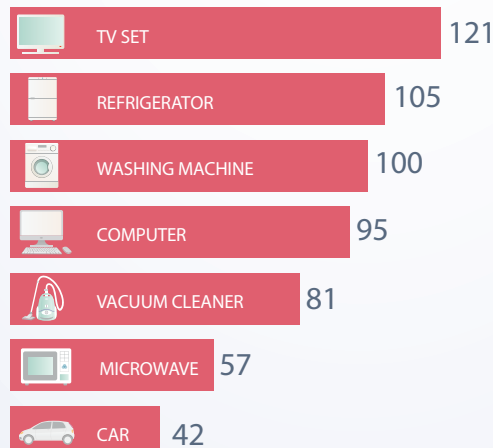
The contribution of children allowances in total income is **2%**

Level of endowment of households with children, in 2019

THE SHARE OF HOUSEHOLDS WITH CHILDREN WITH ACCESS TO FACILITIES



MAIN DURABLE GOODS units per 100 household with children



Food ratio by area, in 2019

monthly per one person



Relative indicators were calculated based on population with usual residence.
*Data are not comparable to previous years, as the HBS methodology was modified.