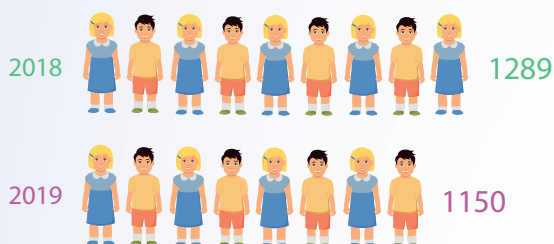


Protecția socială

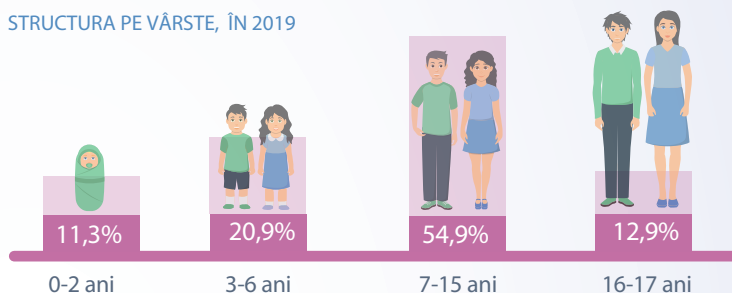


Copii rămași fără ocrotire părintească, inclusiv temporar

NUMĂRUL COPIILOR



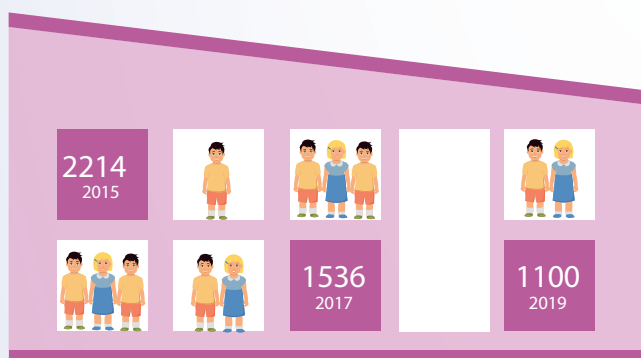
STRUCTURA PE VĂRSTE, ÎN 2019



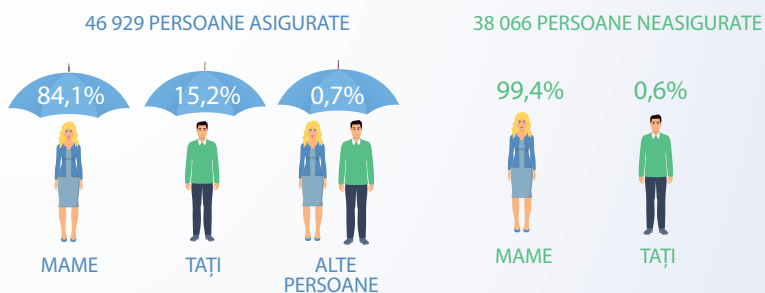
STRUCTURA COPIILOR RĂMAȘI FĂRĂ OCROTIRE PĂRINTEASCĂ, ÎN 2019



Copii în instituții rezidențiale

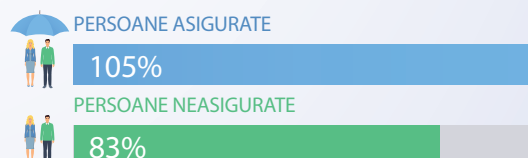


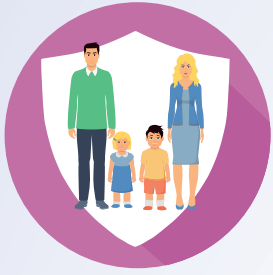
Beneficiari de indemnizații lunare pentru îngrijirea copilului, la 1 ianuarie 2020



Minimul de existență pentru copii, în 2019

RAPORTUL DINTRE MINIMUL DE EXISTENȚĂ ȘI ÎNDEMNIZAȚIA LUNARĂ PENTRU ÎNGRIJIREA COPILULUI, LA 1 IANUARIE 2020

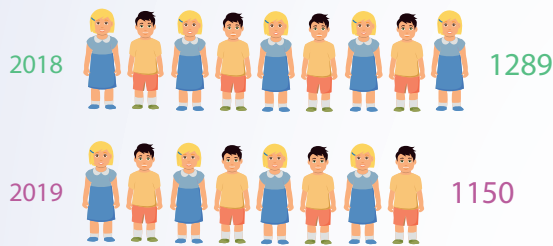




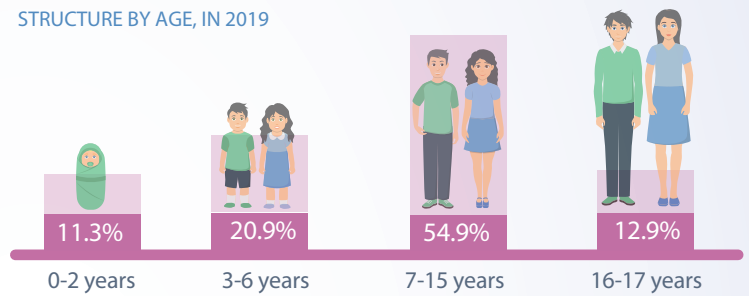
Social protection

Children left without parental care, including temporary

THE NUMBER OF CHILDREN



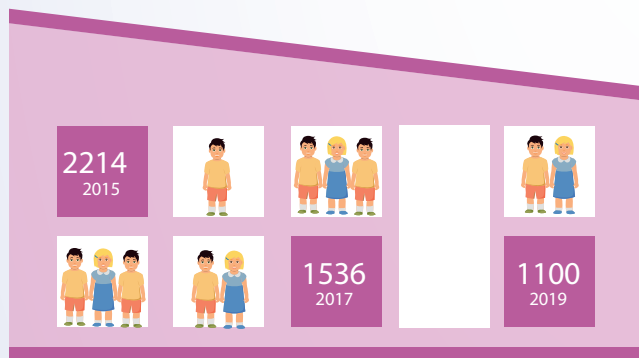
STRUCTURE BY AGE, IN 2019



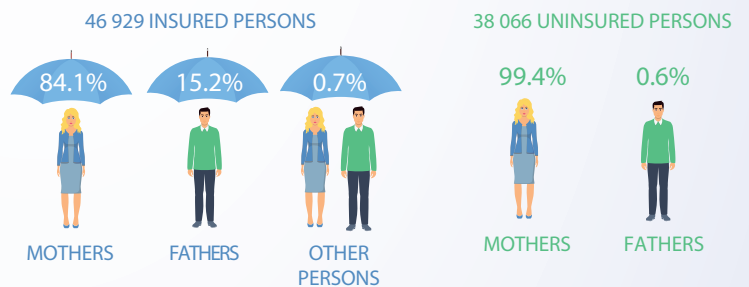
THE STRUCTURE OF CHILDREN WITHOUT PARENTAL CARE, IN 2019



Children in residential institutions



Beneficiaries of monthly childcare indemnity, as of 1st January 2020



The subsistence level for children, in 2019



THE RATIO OF SUBSISTENCE LEVEL AND MONTHLY CHILDCARE INDEMNITY, AS OF 1st JANUARY 2020

