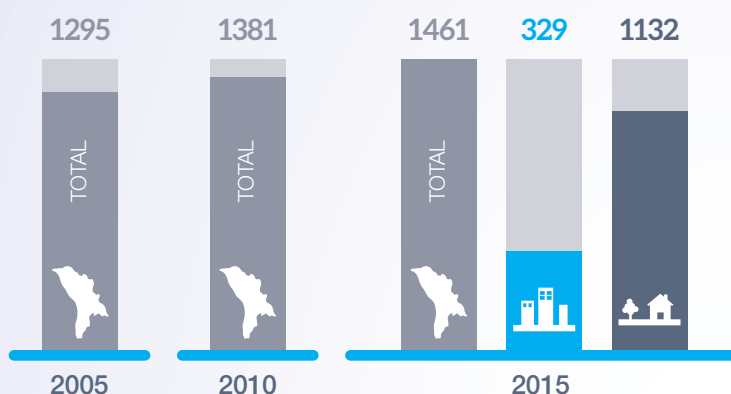


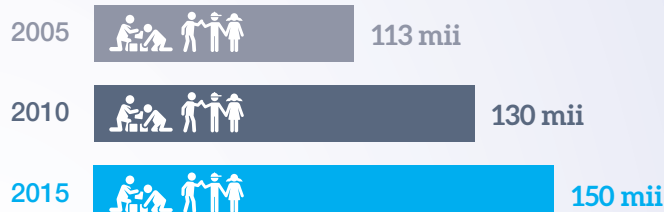


Educație

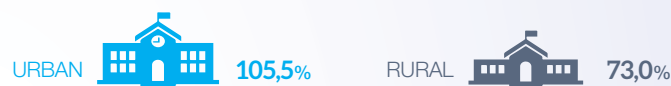
Instituții de educație timpurie



NUMĂRUL DE COPII ÎN INSTITUȚII DE EDUCAȚIE TIMPURIE



RATA BRUTĂ DE CUPRINDERE ÎN 2015



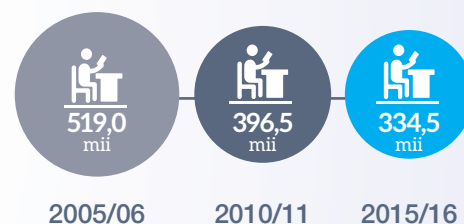
Instituții de învățământ primar și secundar general

NUMĂRUL DE INSTITUȚII



Numărul de instituții de învățământ primar și secundar general **s-a redus**.

NUMĂRUL DE ELEVII

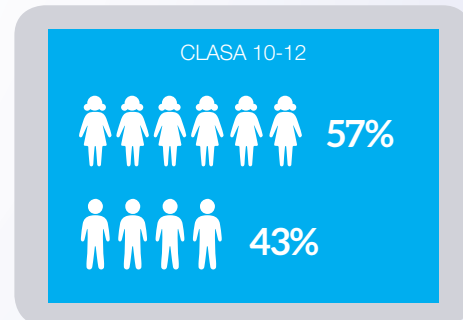
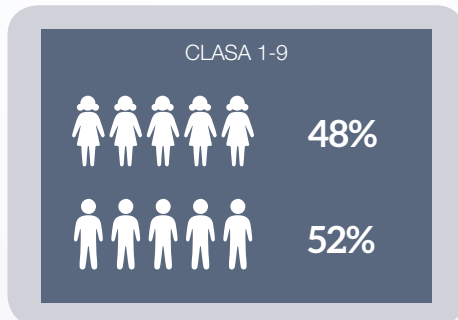


COPII CU CERINȚE EDUCATIONALE SPECIALE (CES)

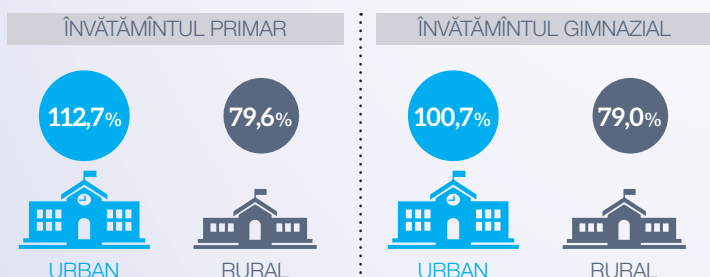
În 2015/16 au fost înregistrați **11,4 mii** copii cu cerințe educaționale speciale.



RAPORTUL FETE-BĂIEȚI ÎN 2015/16

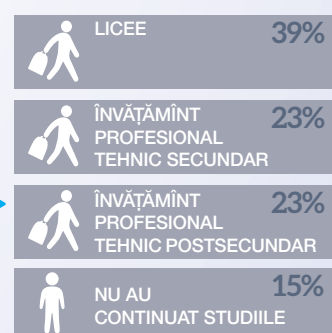


RATA BRUTĂ DE CUPRINDERE ÎN 2015/16



CONTINUARE STUDII ÎN 2015/16

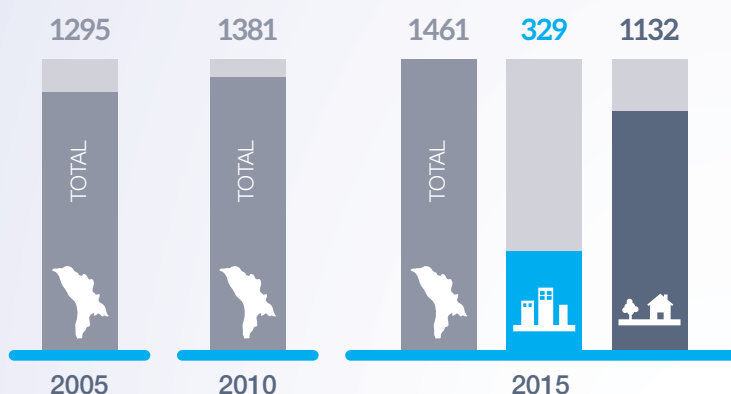
După absolvirea învățământului gimnazial





Education

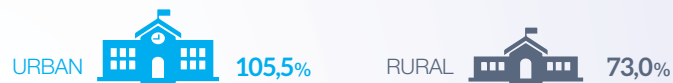
Early education institutions



THE NUMBER OF CHILDREN IN EARLY EDUCATION INSTITUTIONS

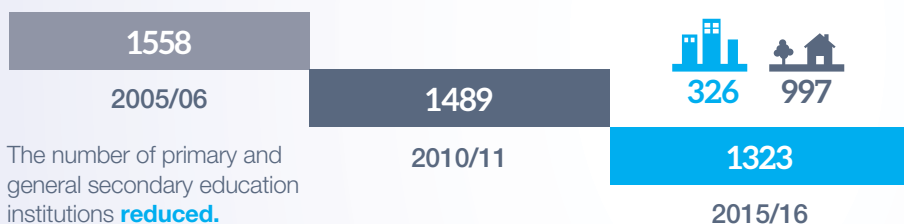


THE GROSS ENROLMENT RATE IN 2015



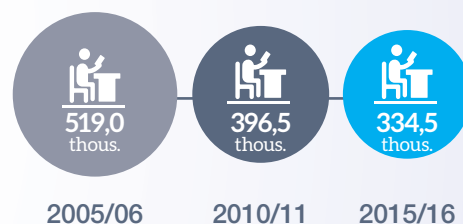
Primary and general education institutions

THE NUMBER OF INSTITUTIONS



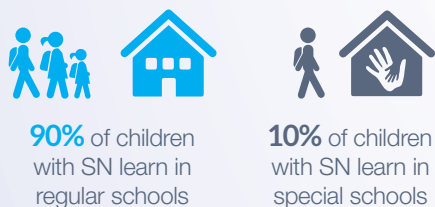
The number of primary and general secondary education institutions **reduced**.

THE NUMBER OF STUDENTS

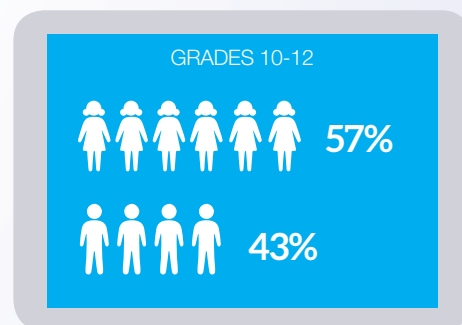
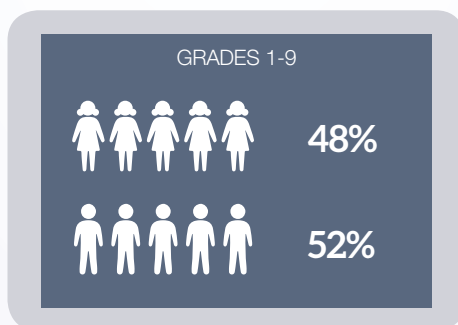


CHILDREN WITH SPECIAL NEEDS

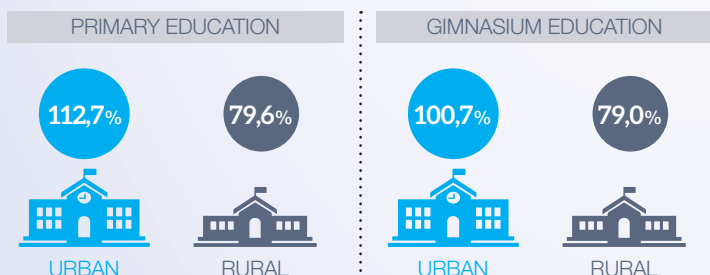
In 2015/16 were registered **11,4 thousand** children with special needs (SN).



GIRLS-BOYS RATIO IN 2015/16



THE GROSS ENROLMENT RATE IN 2015/16



FURTHER STUDIES IN 2015/16

After graduating from gymnasium education

