



Geospatial information for official statistics

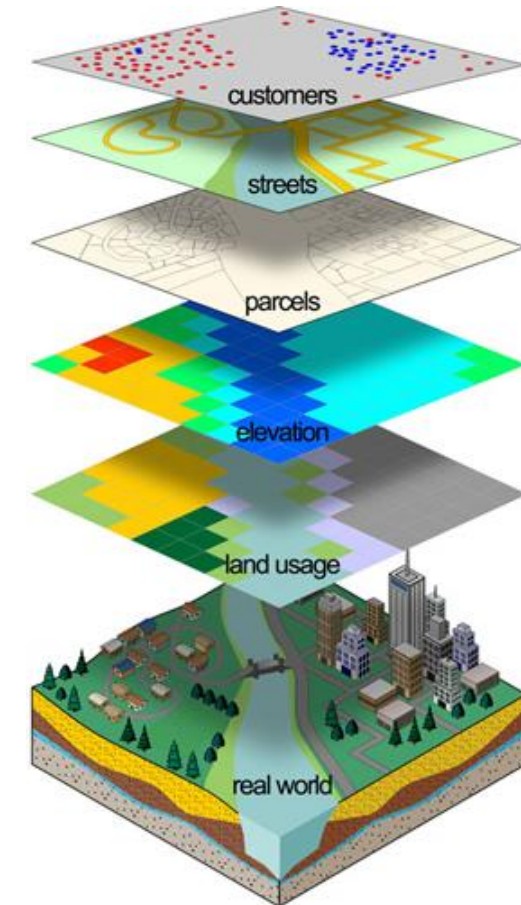
Pavel ȚÎȚU, National Bureau of Statistics

Presentation of project results

*5 July 2022, Palace of the Republic, Chișinău, Republic of
Moldova*



Why are geospatial data important for official statistics?





Geospatial data will serve as basis for the upcoming population and housing census (delimitation of census sectors, quality assurance and coverage of housing units, dissemination of data).



Geospatial data will serve as a sampling framework for statistical survey conducted within households.



Geospatial data will be used for disseminating official statistics.

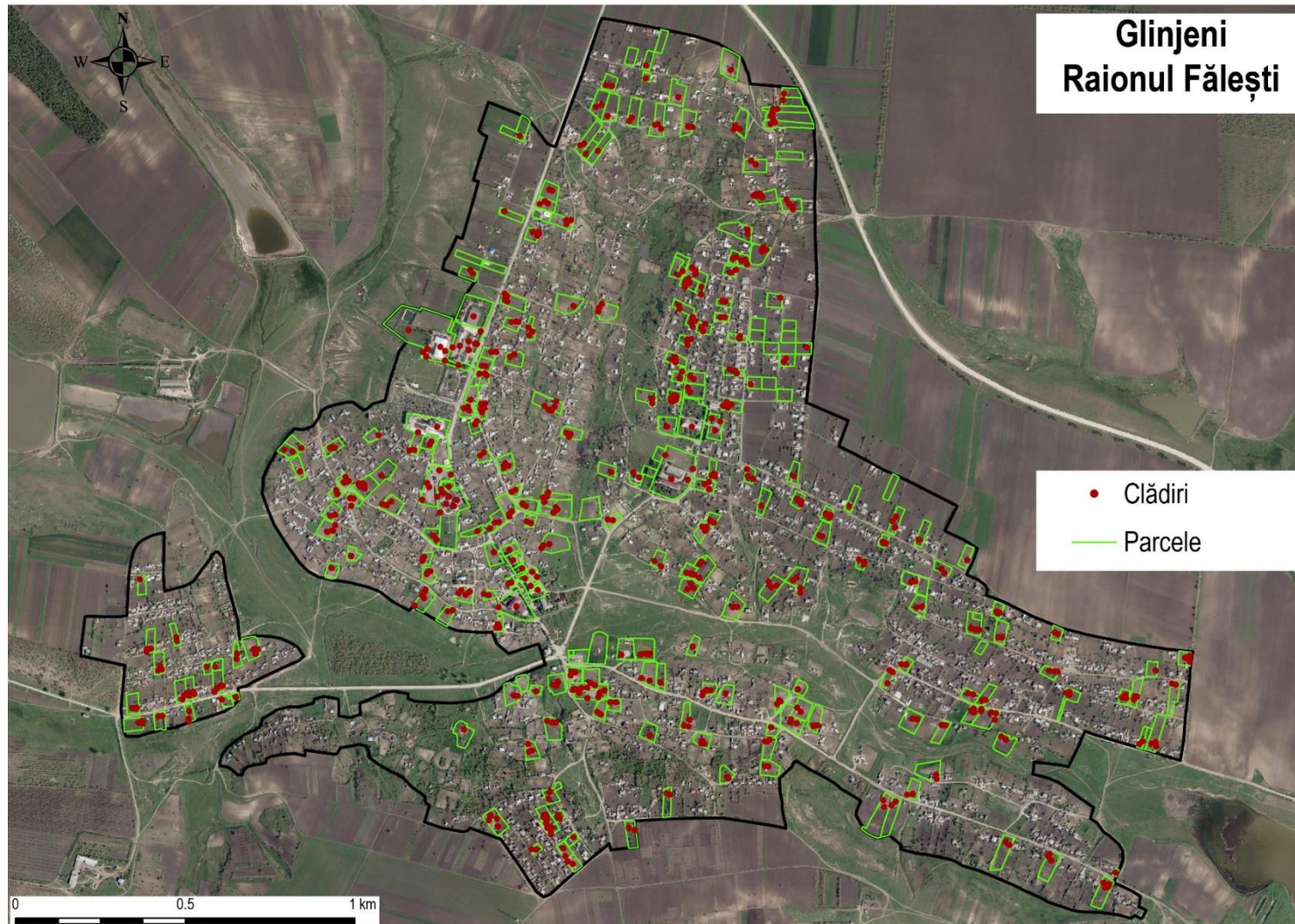
By means of GIS tools, statistical data can be presented in an effective and attractive way for all users, regardless of their level of knowledge).

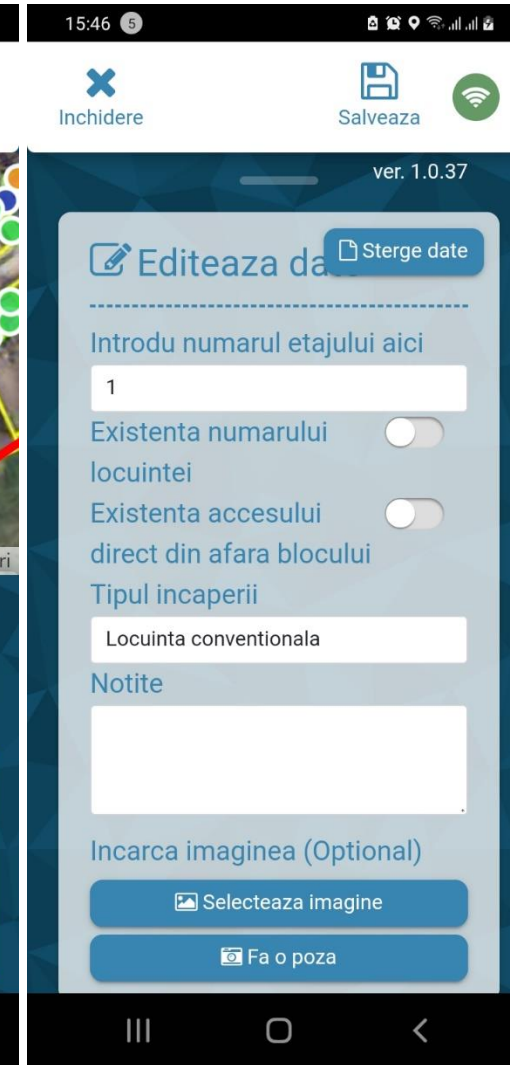
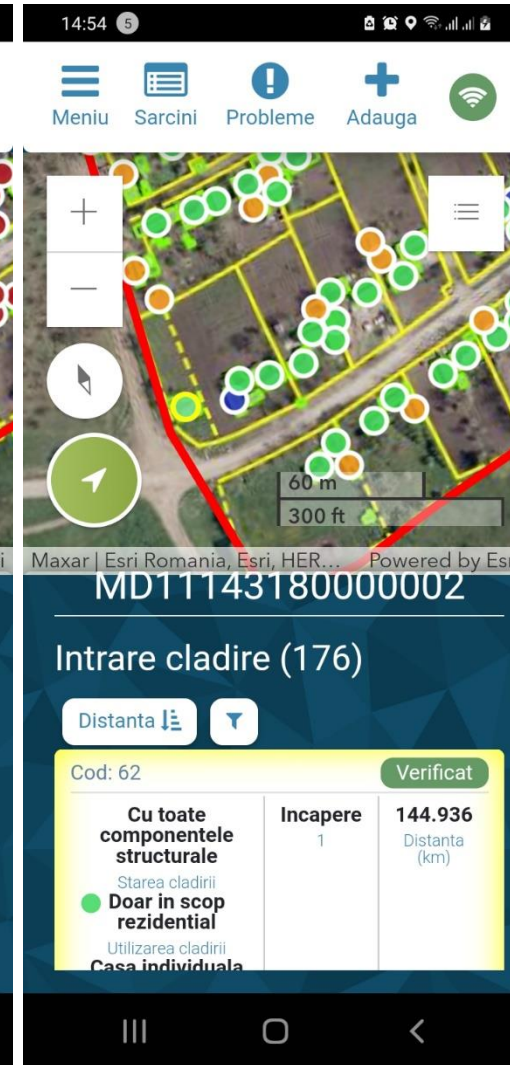
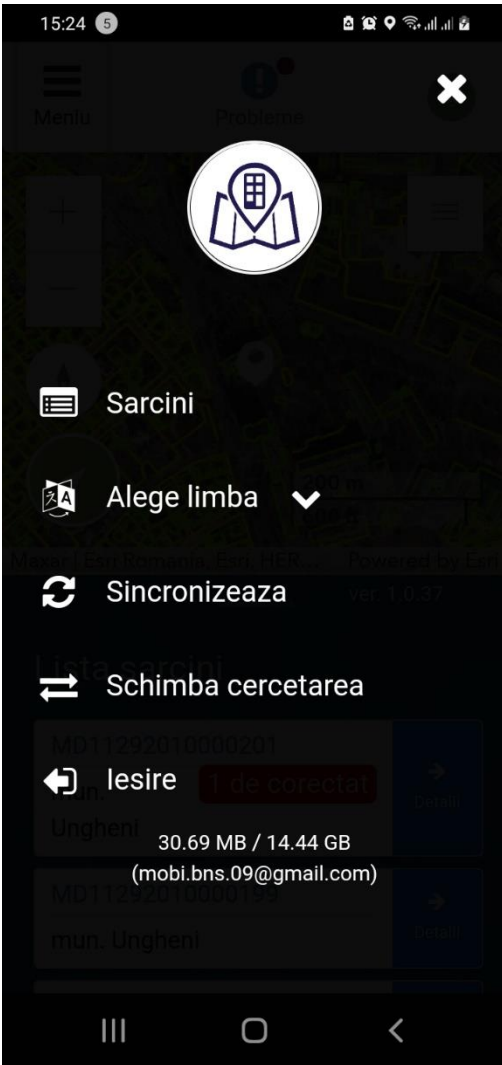


In the future, geospatial data can also be used for the implementation of a statistical register of buildings and dwellings, and for the georeferencing of statistical business units.



The NBS developed and reinforced **technical partnership** with the Cadastre Department, the APS and the Agency for Land Relations and Cadastre.





FIELDMAPSTAT

- DASHBOARD
- MONITORIZARE
- MANAGEMENTUL CERCETARI
- SETARI

« Cercetare curenta: **Colectare2021** »

MD1114318000002 Utilizator Export statistici

Statistici

Harti Dublu clic pe EA pentru afisare cladiri si intrari

Găsire adresă sau loc

Intrare cladire

COD: 62

LOCALITATE DIFERITA FATA DE CEA ATRIBUITA?: No

EXISTENTA DENUMIRII STRAZII: No

EXISTENTA NUMARULUI CLADIRII: Yes

NUMARUL CLADIRII: 46

EXISTENTA BAREI: No

STAREA CLADIRII: Cu toate componentele structurale

UTILIZAREA CLADIRII: Doar in scop rezidential

TIPUL CLADIRII REZIDENTIALE: Casa individuala

INTRODU NUMARUL DE ETAJE AICI: 1

PRECIZIA GPS-ULUI DE DETECTARE: 3.9000000953674316

DETECTIE TIMPSAMP GPS: mon jun 21 2021 11:50:11 gmt+0300 (eastern european summer time)

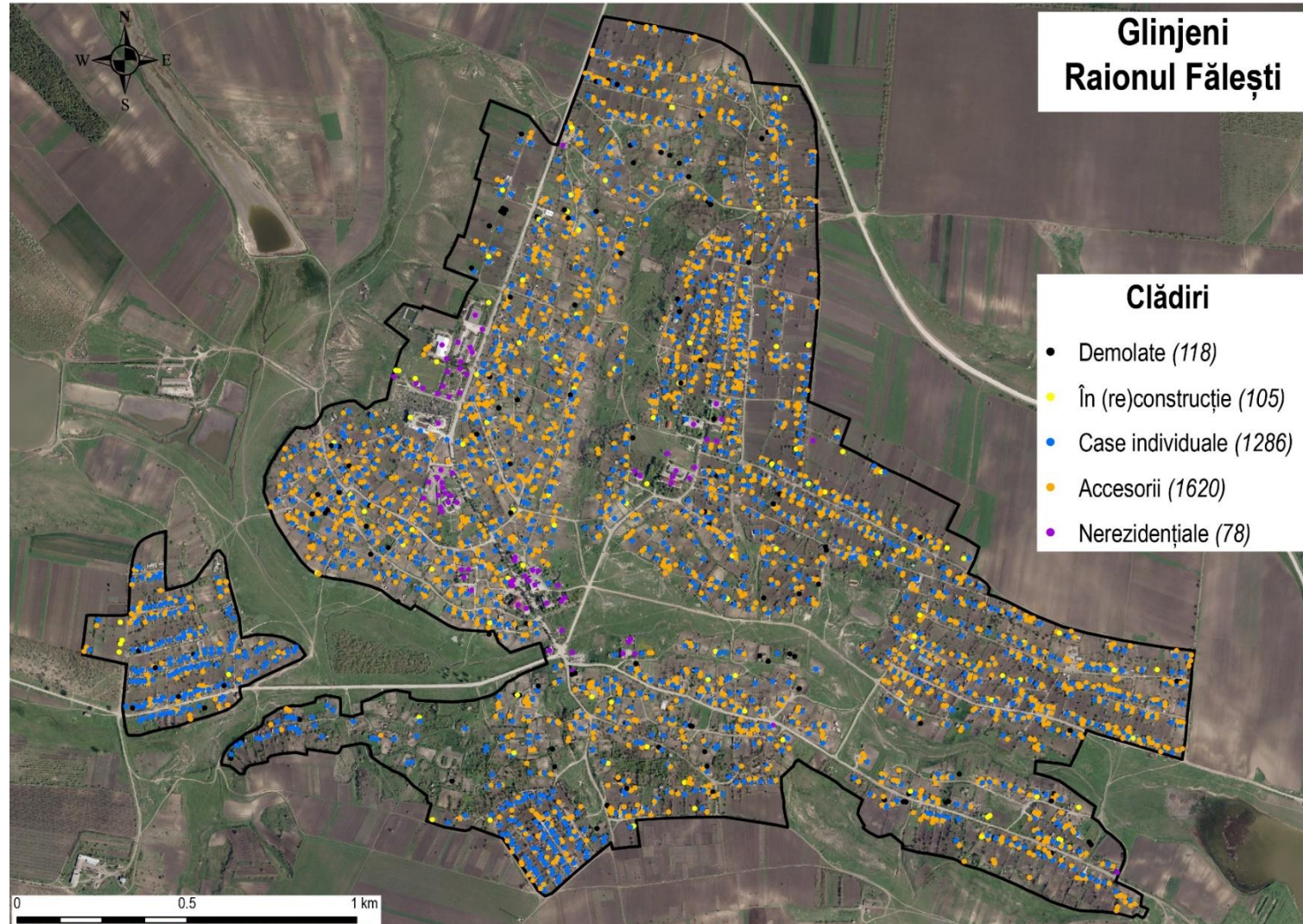
POZITIA DE DETECTARE: 47.5941118, 27.8719552

CHILD TABULAR LAYERS: [Housing unit \(1\)](#)

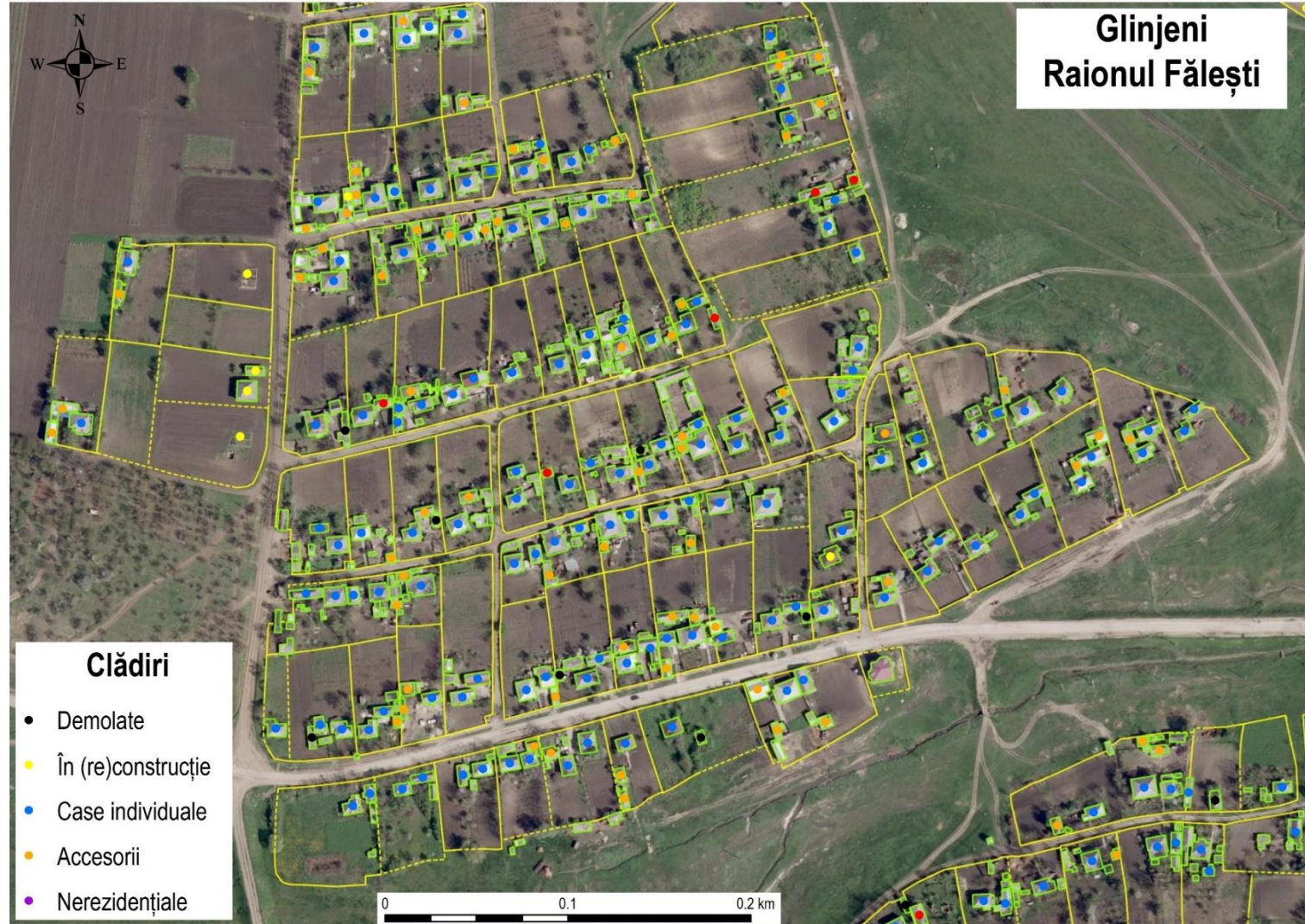
ULTIMA ACTUALIZARE: 30 iunie 2022 15:44

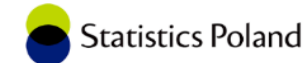
ULTIMUL UTILIZATOR ACTUALIZARE: OPR109_lurie Titu

+ Adaugati subiectul Invalideaza









floornu	theredw	dwnu	directA	typeBldU
1	True	161	False	Conventional dwelling
1	True	162	False	Conventional dwelling
1	True	163	False	Conventional dwelling
1	True	164	False	Conventional dwelling
2	True	165	False	Conventional dwelling
2	True	166	False	Conventional dwelling
2	True	167	False	Conventional dwelling
2	True	168	False	Conventional dwelling
3	True	169	False	Conventional dwelling
3	True	170	False	Conventional dwelling
3	True	171	False	Conventional dwelling
3	True	172	False	Conventional dwelling
4	True	173	False	Conventional dwelling
4	True	174	False	Conventional dwelling
4	True	175	False	Conventional dwelling
4	True	176	False	Conventional dwelling
5	True	177	False	Conventional dwelling
5	True	178	False	Conventional dwelling
5	True	179	False	Conventional dwelling
5	True	180	False	Conventional dwelling

floornu	theredw	dwnu	directA	typeBldU
1	True	121	False	Conventional dwelling
1	True	122	False	Conventional dwelling
1	True	123	False	Conventional dwelling
1	True	124	False	Conventional dwelling
2	True	125	False	Conventional dwelling
2	True	126	False	Conventional dwelling
2	True	127	False	Conventional dwelling
2	True	128	False	Conventional dwelling
3	True	129	False	Conventional dwelling
3	True	130	False	Conventional dwelling
3	True	131	False	Conventional dwelling
3	True	132	False	Conventional dwelling
4	True	133	False	Conventional dwelling
4	True	134	False	Conventional dwelling
4	True	135	False	Conventional dwelling
4	True	136	False	Conventional dwelling
5	True	137	False	Conventional dwelling
5	True	138	False	Conventional dwelling
5	True	139	False	Conventional dwelling
5	True	140	False	Conventional dwelling

floornu	theredw	dwnu	directA	typeBldU
1	True	81	False	Conventional dwelling
1	True	82	False	Conventional dwelling
1	True	83	False	Conventional dwelling
1	True	82a	True	Conventional dwelling
2	True	84	False	Conventional dwelling
2	True	85	False	Conventional dwelling
2	True	86	False	Conventional dwelling
2	True	87	False	Conventional dwelling
3	True	88	False	Conventional dwelling
3	True	89	False	Conventional dwelling
3	True	90	False	Conventional dwelling
3	True	91	False	Conventional dwelling
4	True	92	False	Conventional dwelling
4	True	93	False	Conventional dwelling
4	True	94	False	Conventional dwelling
4	True	95	False	Conventional dwelling
5	True	96	False	Conventional dwelling
5	True	97	False	Conventional dwelling
5	True	98	False	Conventional dwelling
5	True	99	False	Conventional dwelling

floornu	theredw	dwnu	directA	typeBldU
1	True	1	False	Conventional dwelling
1	True	2	False	Conventional dwelling
1	True	3	False	Conventional dwelling
1	True	4	False	Conventional dwelling
2	True	5	False	Conventional dwelling
2	True	6	False	Conventional dwelling
2	True	7	False	Conventional dwelling
2	True	8	False	Conventional dwelling
3	True	9	False	Conventional dwelling
3	True	10	False	Conventional dwelling
3	True	11	False	Conventional dwelling
3	True	12	False	Conventional dwelling
4	True	13	False	Conventional dwelling
4	True	14	False	Conventional dwelling
4	True	15	False	Conventional dwelling
4	True	16	False	Conventional dwelling
5	True	17	False	Conventional dwelling
5	True	18	False	Conventional dwelling
5	True	19	False	Conventional dwelling
5	True	20	False	Conventional dwelling



EU funded Project ENI/2019/406-262
“Technical Assistance to Support the National Bureau of Statistics of the Republic of Moldova”



Thank you for your attention!

pavel.titu@statistica.gov.md