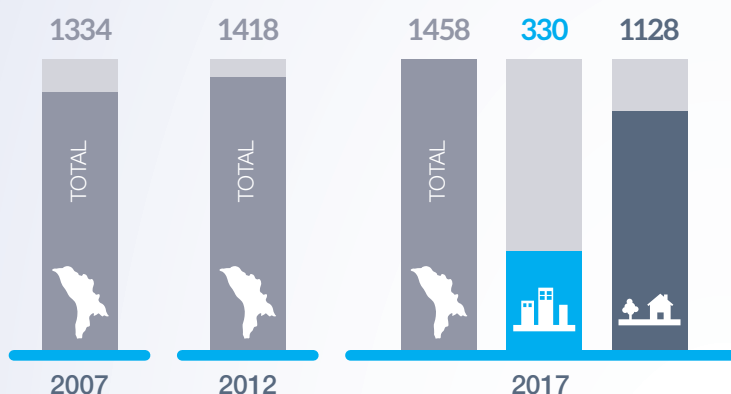


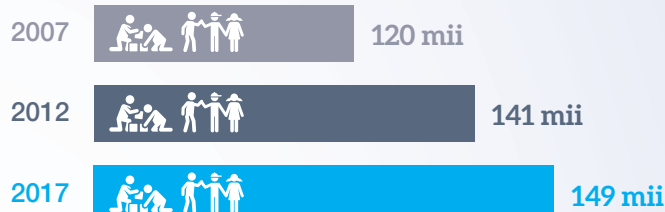


# Educație

## Instituții de educație timpurie



### NUMĂRUL DE COPII ÎN INSTITUȚII DE EDUCAȚIE TIMPURIE

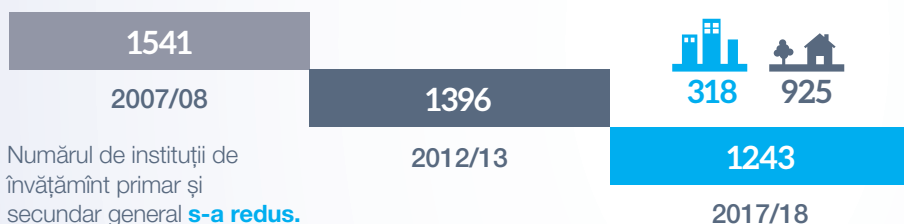


### RATA BRUTĂ DE CUPRINDERE ÎN 2017



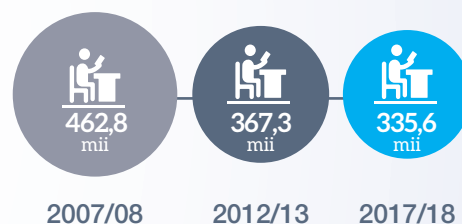
## Instituții de învățământ primar și secundar general

### NUMĂRUL DE INSTITUȚII



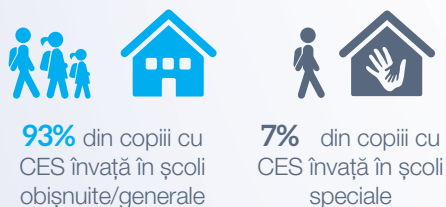
Numărul de instituții de învățământ primar și secundar general **s-a redus**.

### NUMĂRUL DE ELEVII

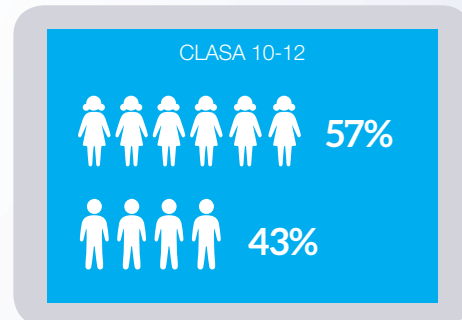
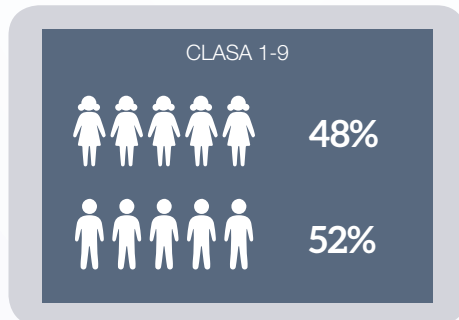


### COPII CU CERINȚE EDUCATIONALE SPECIALE (CES)

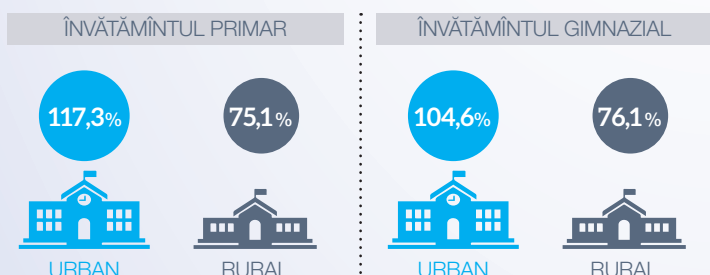
În 2017/18 au fost înregistrați **10,6 mii** copii cu cerințe educaționale speciale.



### RAPORTUL FETE-BĂIEȚI ÎN 2017/18

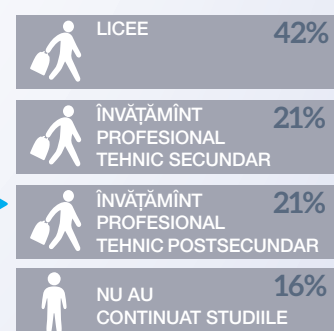


### RATA BRUTĂ DE CUPRINDERE ÎN 2017/18



### CONTINUARE STUDII ÎN 2017/18

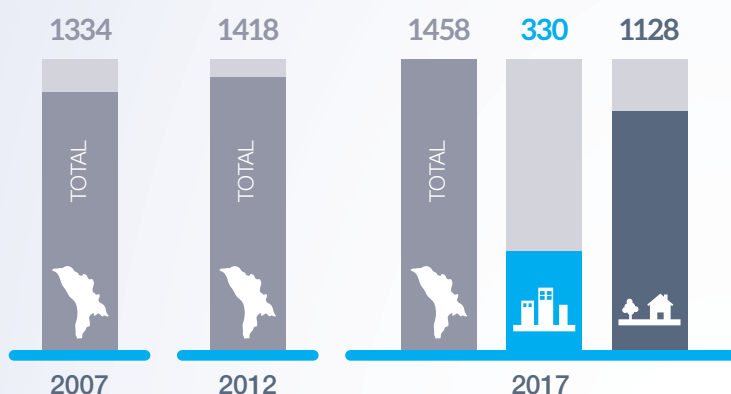
După absolvirea învățământului gimnazial



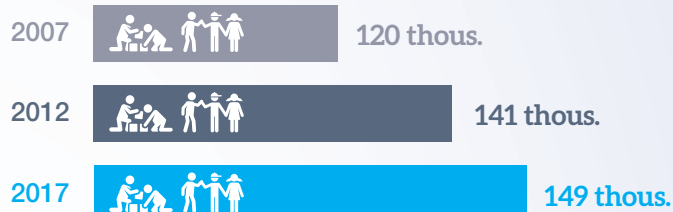


# Education

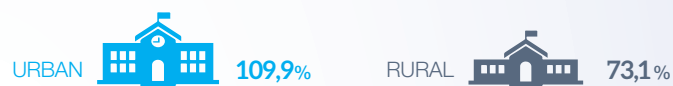
## Early education institutions



### THE NUMBER OF CHILDREN IN EARLY EDUCATION INSTITUTIONS

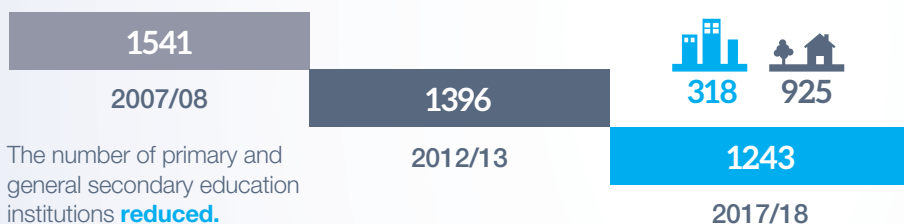


### THE GROSS ENROLMENT RATE IN 2017



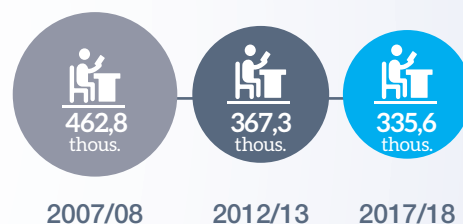
## Primary and general education institutions

### THE NUMBER OF INSTITUTIONS



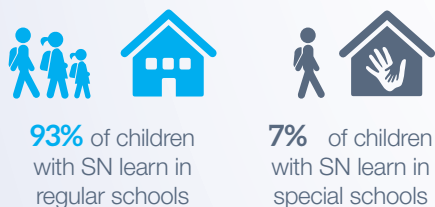
The number of primary and general secondary education institutions **reduced**.

### THE NUMBER OF STUDENTS

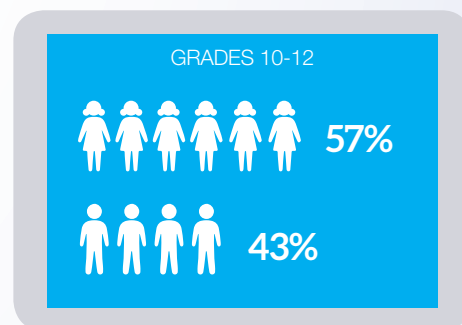
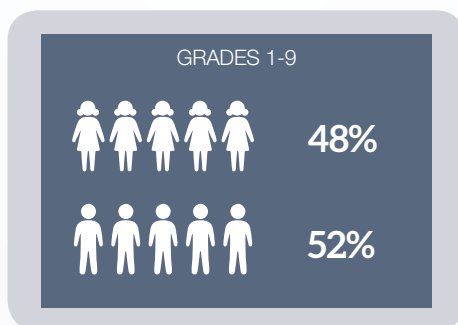


### CHILDREN WITH SPECIAL NEEDS

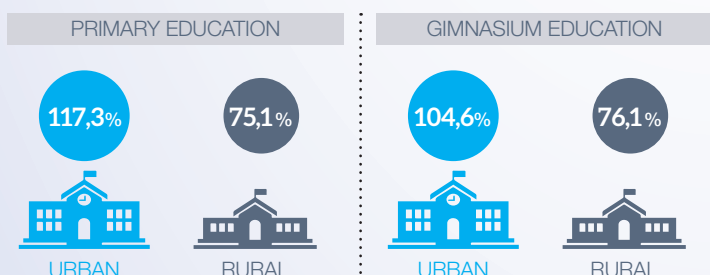
In 2017/18 were registered **10,6 thousand** children with special needs (SN).



### GIRLS-BOYS RATIO IN 2017/18



### THE GROSS ENROLMENT RATE IN 2017/18



### FURTHER STUDIES IN 2017/18

After graduating from gymnasium education

