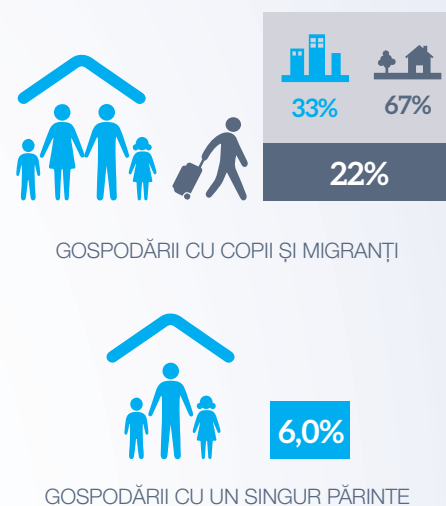
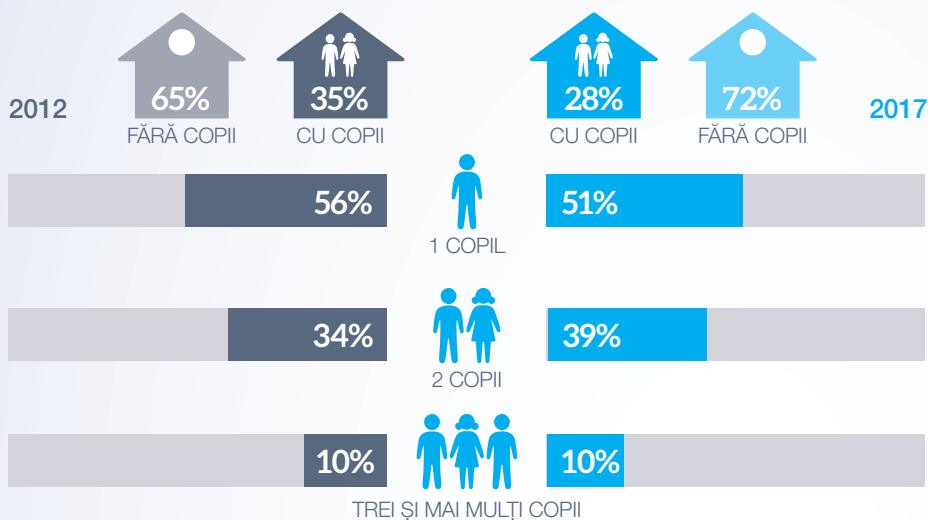




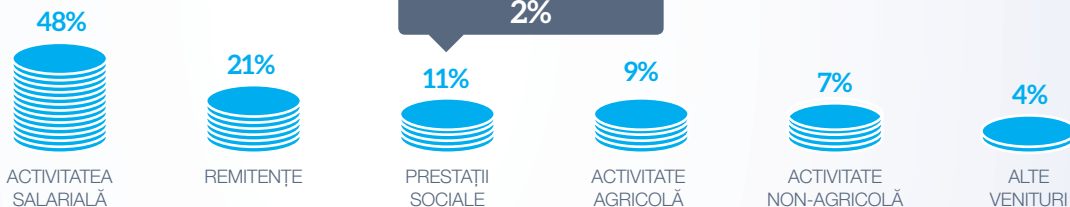
Familia și copilul

Principalele caracteristici ale gospodăriilor cu copii



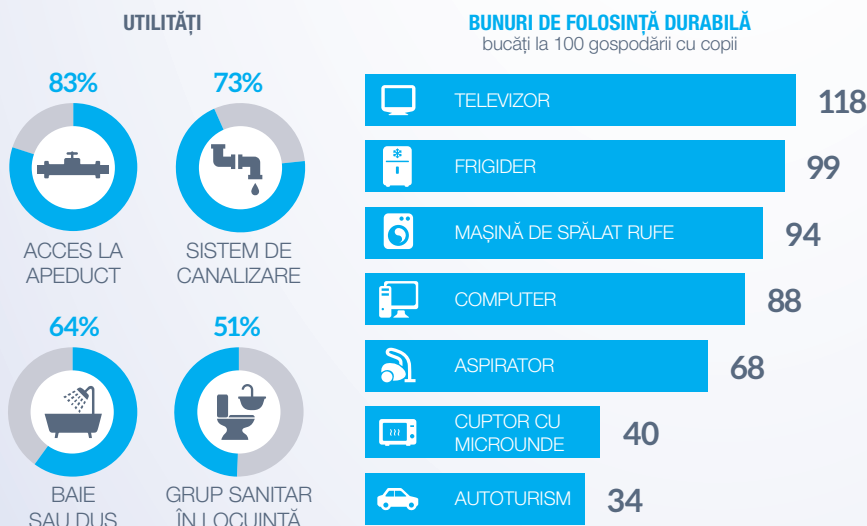
Veniturile gospodăriilor cu copii în 2017

Veniturile disponibile pe o persoană din cadrul gospodăriilor cu copii a constituit **1862,4 lei** (lunar)



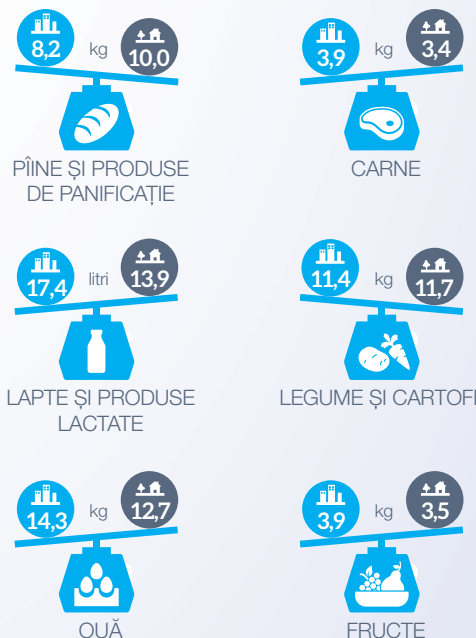
Nivelul de dotare a gospodăriilor cu copii în 2017

În ultimii ani s-a îmbunătățit situația privind dotarea locuințelor cu principalele utilități și bunuri de folosință durabilă.



Rația alimentară în 2017

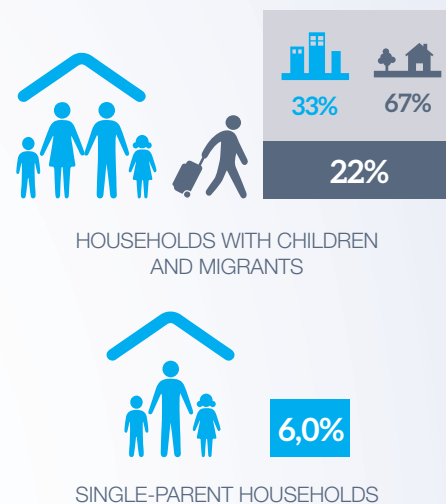
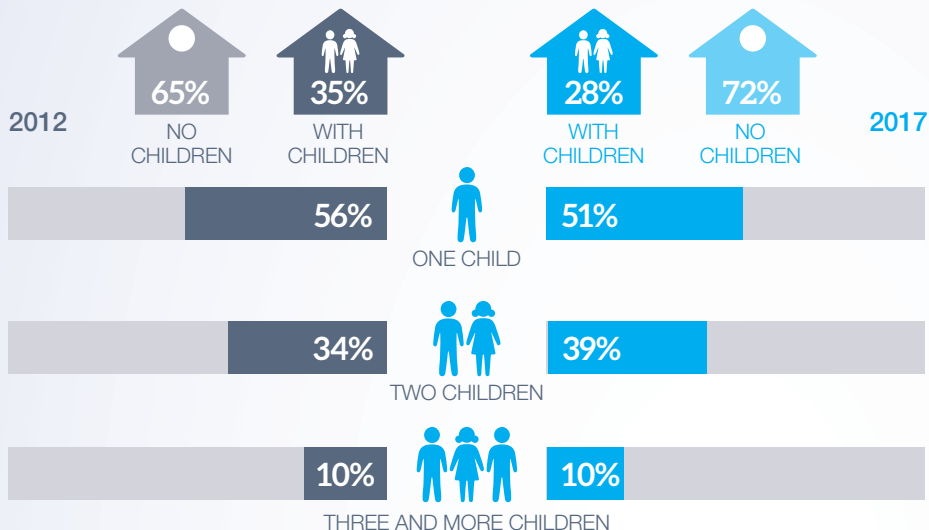
lunar, pentru o persoană





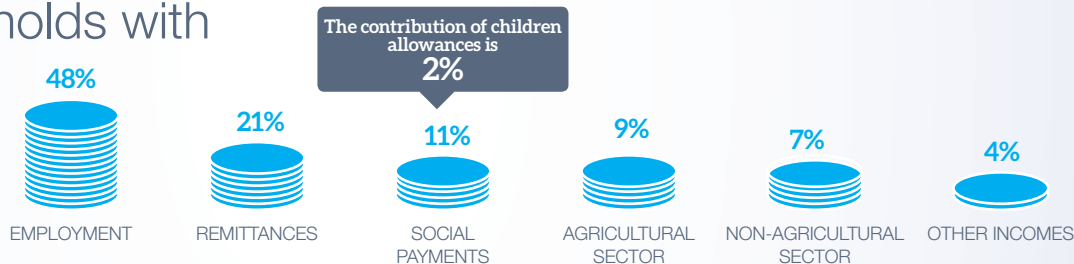
Family and child

Main characteristics of households with children



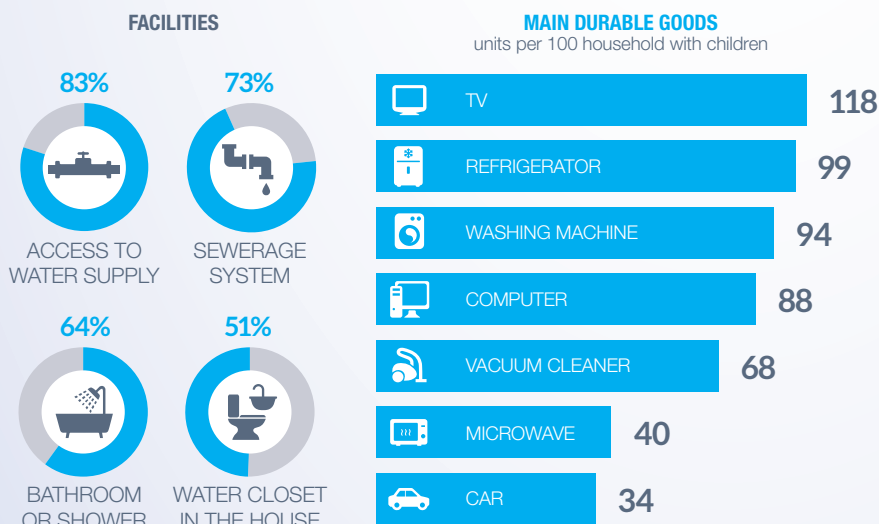
Income of households with children in 2017

The disposable income per person, in the households with children, was **1862,4 MDL** monthly



Level of equipment of households with children in 2017

During the last years, the situation on household equipment with the main facilities and the main durable goods improved.



Food ratio in 2017

monthly per one person

